

# The Data Collection Technology and limitation In Smart City



- Smart City or Intelligent City is a form of intelligent building diversification, which content smart grid ; sensor devices ; cloud data and internet collection and data analyze and the product of all the information age, its basic elements are the communication system network



# Domains of data collection

- Smart city data collection technologies both bottom up and up down are using in several Domains, such as Government , Security and emergency services, Transport, Energy, Waste, Environment, Buildings, Homes, all those domain are construct our smart city network and benefit our urban life. The following will be focus discussing how those domain use their data collection technology and the concern about our methods during the data collection.

- **Government**
- **Public Security**
- **Transport**
- **Energy**
- **Waste**
- **Environment**
- **Homes/ individual buildings**

# Government



- e-government can improve the efficiency of government work, improve the level of governance, optimize the service function, it is also an important tool to improve the transparency and effective supervision of the government;

# Public Security

- The public securities are sever ways to operate in smart city. the security and emergency are not only defined in the public order and anti-terrorist. Through the "smart city" intelligent operation center platform, access to a large number of effective information, real-time analysis, communication, collaboration, urban management business and events for emergence control

# "tellme @ 1823" project



New  
Submission



My Submission  
History



My Contact  
Information

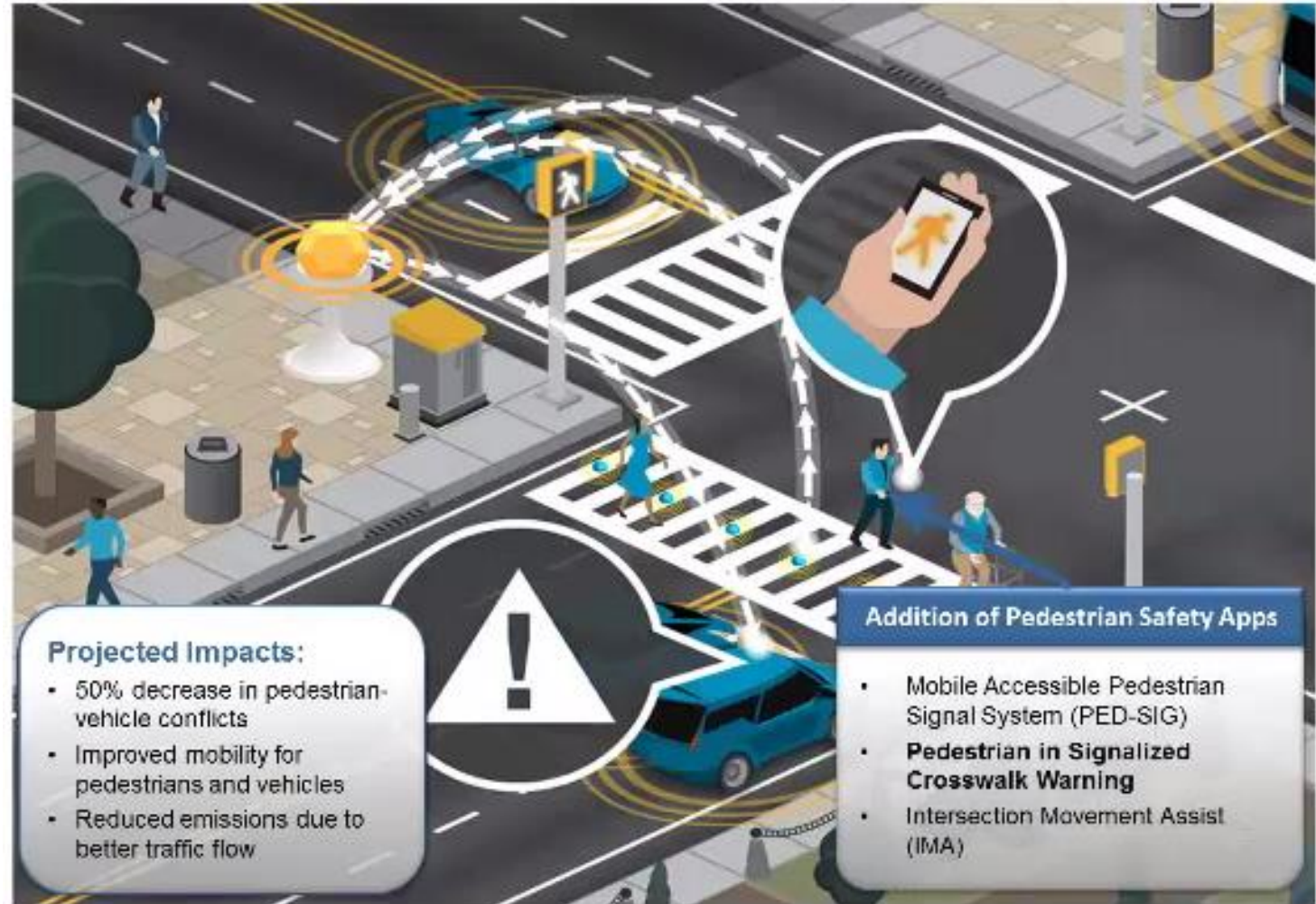


About  
Tell me@1823





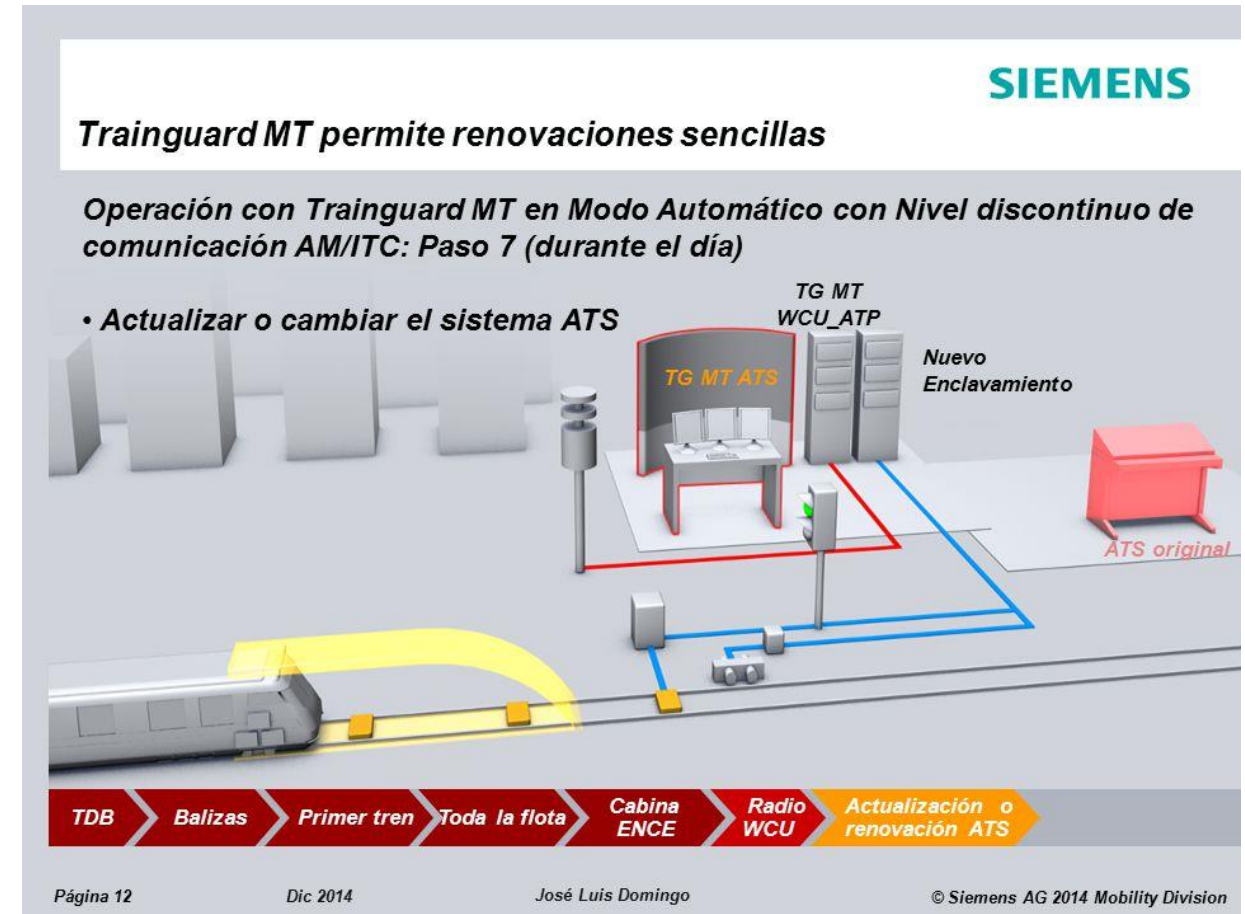
# Transport



- In the smart city we use the transport grid every day. It might be rail or driveway or bike lane or even side walk those are all smart transportation system.

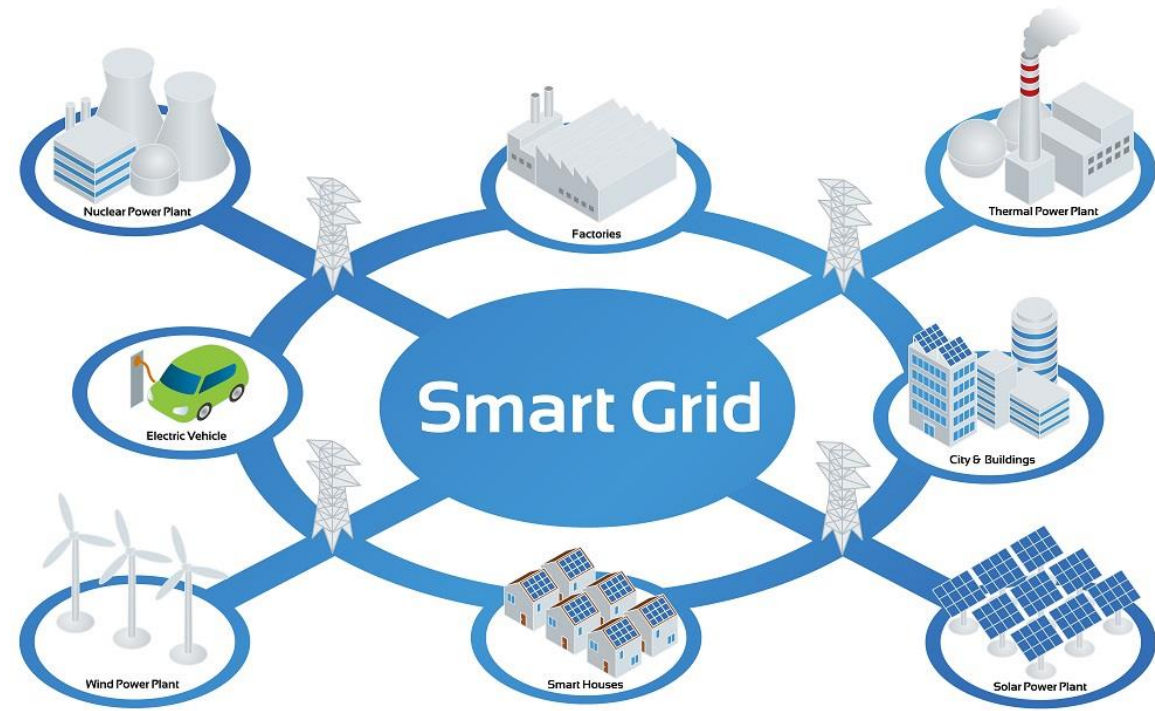


# Trainguard MT

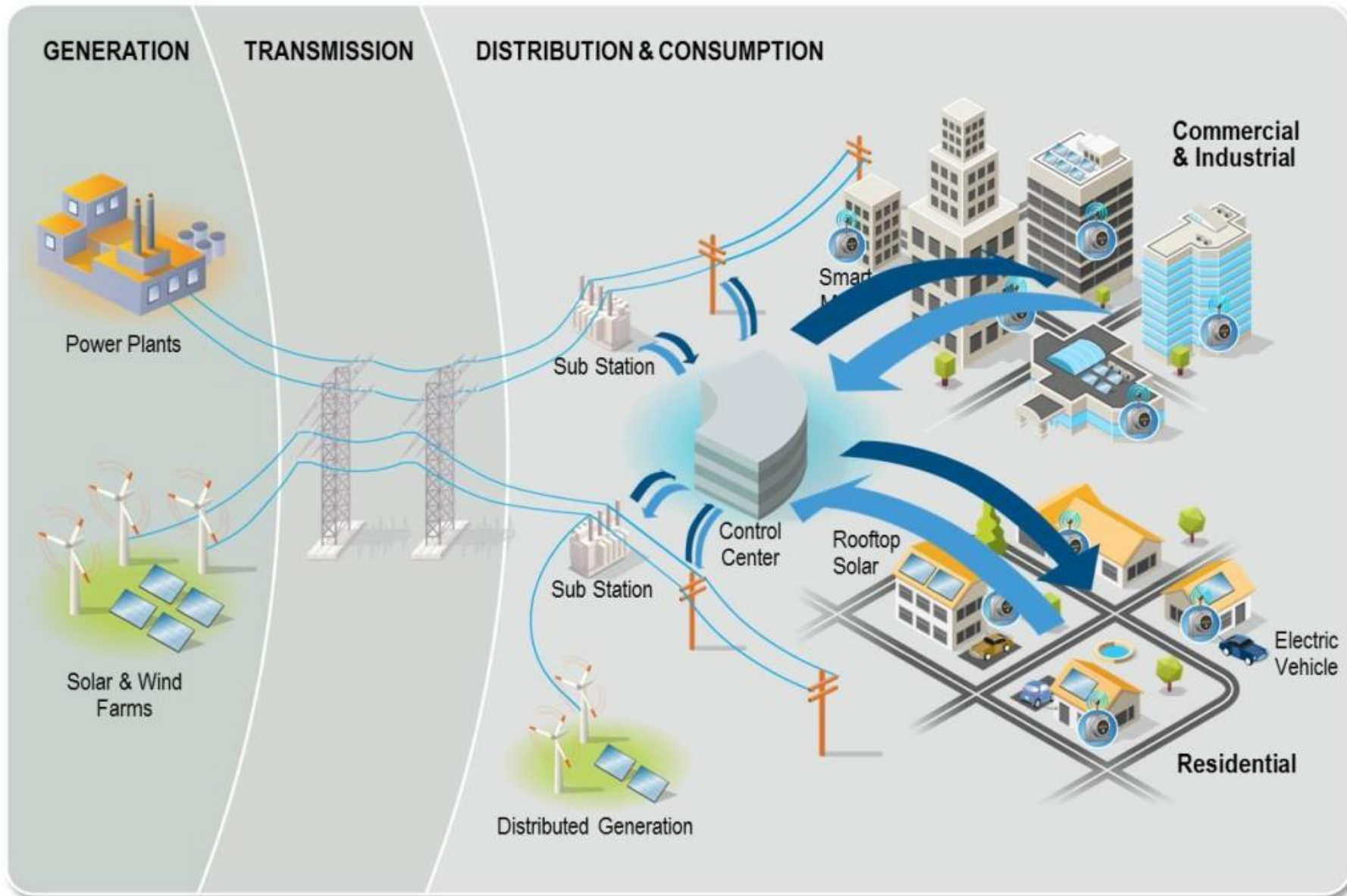


The smart about trainguard MT systems is not only operate railway systems, in addition to encouraging local buses, traffic can be optimized by incorporating bus and private cars into a single traffic management framework.

# Energy



- As we all know, the production of electricity, transportation, consumption must be completed at the same time, which requires electricity supply and demand must be in the instant to achieve a balance between supply and demand. On the one hand, from the power generation side, we must solve the power generation, when the power generate? how much power? when is the peak hours and other issues.



# Waste

- Waste collection in smart city include compactor bins and data analyze data collection routing planning

## Waste bins by Qualcomm

Waste collection in smart city include compactor bins and data analyze data collection routing planning





# Smart city complete model

- San Francisco smart parking systems





# Smart city complete model

- From this point of view, construction of smart city first priority to break the "data isolate", to achieve data sharing and unified management, so that the data really serve the managers or the stakeholders. In addition, we must emphasize to break the industry segmentation, focusing on sharing the integrality effectiveness of data technology.