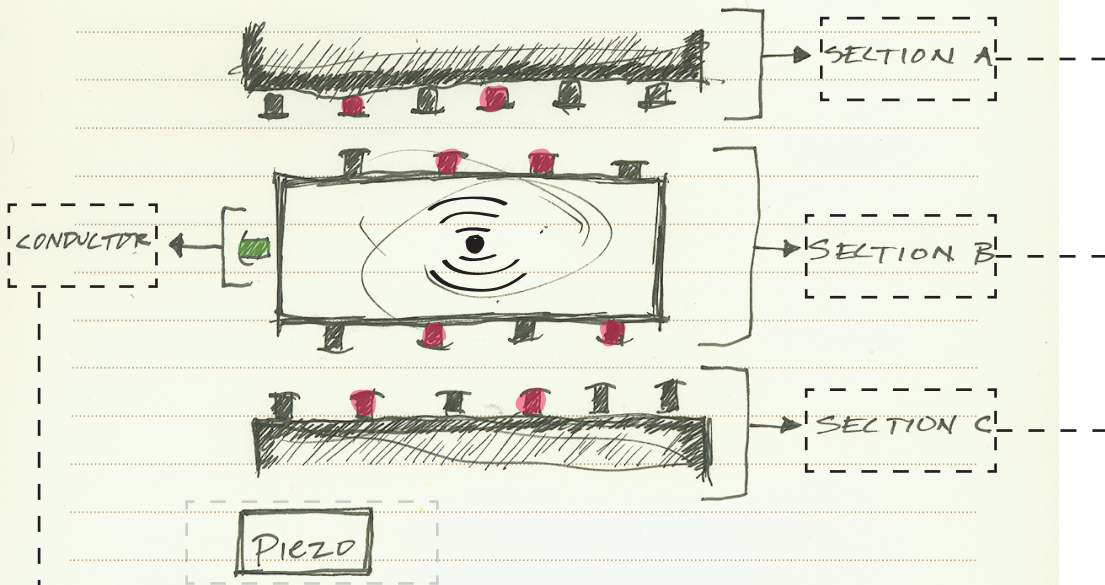


"MUSICAL CHAIRS"



A specified number of chairs in each section of the room will be wired to produce sounds based on each person's movement. A central speaker is used for the output and can be heard by the entire room.

Minim Library for Processing

VARIABLES

- Volume (conductor)
- Tempo
- Sound (sections)

Each section controls a different sound (or series of sounds), while the conductor controls the volume and tempo of the sounds that are produced.

"Conductor" is located in the power seat and controls volume and tempo of the sounds produced by each section.